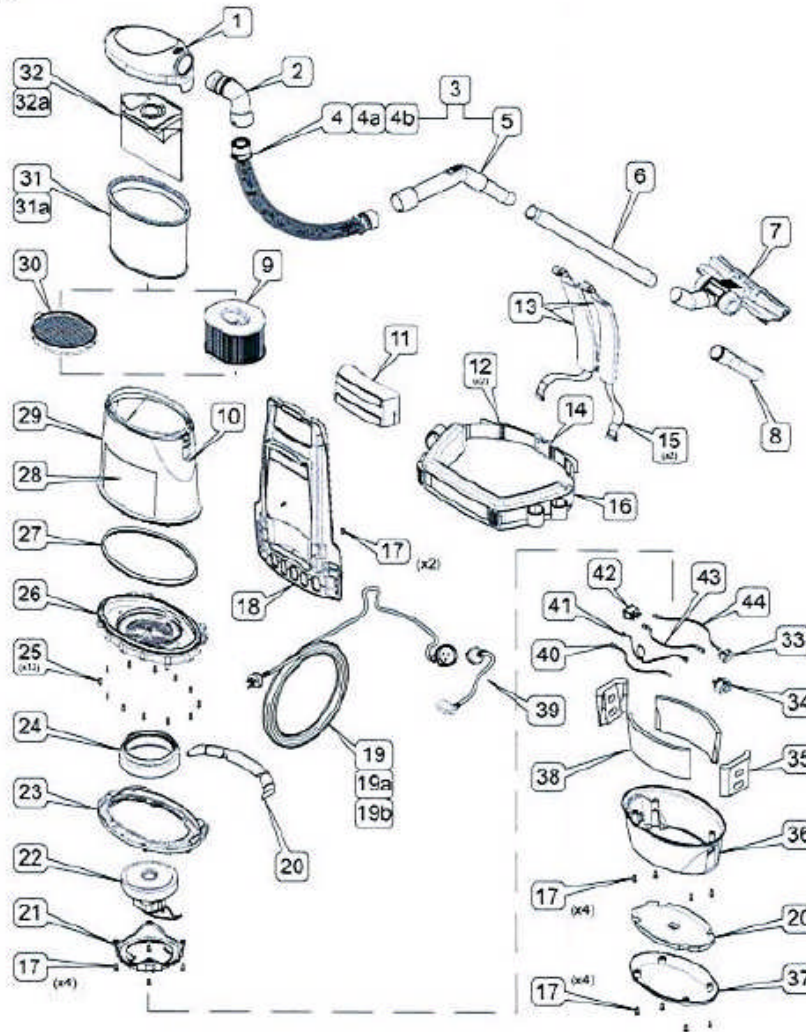


Exploded Diagram



Rocket Vac XP

Parts Guide

No.	Part Name	Part No.	No.	Part Name	Part No.
1	Lid Assy RVXP	13717002	22	Motor Vacuum Harbin 240V	13727002
2	Elbow Inlet	13640001	23	Baffle Motor Housing	13610004
3	Hose BEP Assy Ø32	13677002	24	Seal Motor Harbin	13780006
4	Hose Ø32 x 1.2m Blk	13670006	25	Screw WN1412 KB40 x 12 ZP	13780002
4a	Ring Click Blk	13770003	26	Base Upper Canister	13610003
4b	Fitting Screwed Hose HUL Ø32	13650002	27	Seal Canister Housing	13780004
5	Elbow BEP Ø32 Blk	13640002	28	Label RVXP	13710009
6	Wand Ø32 x 550mm Cr. Steel	13820011	29	Housing Upper Canister Assy	13677001
7	Tool Floor Ezi-Glide	13797001	30	Filter VFD Assy	13657003
8	Tool Crevice Ø32 Blk	13790001	31	Filter Bag Assy 5L (standard)	13657001
9	Filter HEPA & Fastener Assy	13657004	31a	Filter Bag Assy 4L (HEPA)	13657002
10	Label Maintenance	13710011	32	Filter Paper Bag 5/Pkt (Standard)	13657006
11	Pad Back Blk	13750003	32a	Filter Paper Bag 5/Pkt (HEPA)	13657007
12	Buckle Adjuster 38	13610006	33	Socket Inlet C14	13780007
13	Pad Shoulder Blk L & R Set	13750004	34	Socket Outlet C18	13780008
14	Buckle Side Release 38	13610005	35	Insulation Motor Housing End	13680001
15	Buckle Shoulder LL 38	13610007	36	Housing Lower Canister In, Out and Sw	13670004
16	Pad Waist Blk	13750005	37	Cap Motor Housing RVXP	13620004
17	Screw WN1412 KB50 x 16 ZP	13780003	38	Insulation Motor Housing Side (set)	13680002
18	Frame RVXP	13650001	39	Cord Pig Tail 335mm RVXP	13620009
19	Cord Ext'n 18m RVXP	13620010	40	Wire N 240V Switch-PO RVXP	13820003
19a	Cord Ext'n 18m RVXP with RCD (Guardian models)	13627011	41	Wire A 240V Switch-PO RVXP	13820004
19b	Cord EU Assy (European models)	13627001	42	Switch Rocker 2HP	13780014
20	Insulation End Cap (set)	13680003	43	Wire N 240V Inlet-Switch RVXP	13820002
21	Clamp Motor	13620005	44	Wire-Thermostat Assy RVXP	13827001